


barnsleycivic.co.uk


TRUSTEES OF BARNSLEY CIVIC

**BARNSLEY
CIVIC**

INFORMATION PACK



WELCOME


Thank you so much for your interest in becoming a trustee at Barnsley Civic.

Barnsley Civic is a regionally significant, contemporary arts centre in the heart of Barnsley town centre. With ambitious new leadership in place, and a growing cultural programme, this is a brilliant time to join our dynamic team.

We are a passionate and creative bunch. We believe in our shared cultural & social aims, and work hard together to deliver on them. Our collaborative team-led approach gives everyone a chance to shape what we do and how we do it. In late 2024 we reopened our Eldon St entrance after more than 26 years, as part of a £2.5 million redevelopment project. As we prepare for our 150-year anniversary in 2027-28, further capital investment will unlock more of our unique building, and we will be developing a wider and more diverse cultural programme; both inside and outside our historic walls.

In these challenging times, we are constantly seeking out new opportunities and new partnerships. The diversification of income streams goes hand-in-hand with an expansion of cultural ambition. Our optimistic vision for the future is that Barnsley Civic will play an ever-increasing role in the cultural and civic life of South Yorkshire, and the wider regional & national cultural landscape.

If you are looking for a new challenge, and want to be part of a positive & team, then please consider applying to be one of our Trustees. Please check our website to see what specific skills we're looking for at this time

We look forward to hearing from you.



Dr. Dan Winder
CEO & Artistic Director



Elaine Price
Chair of the Barnsley
Civic Board



ABOUT US

We are a future-focused, contemporary arts centre positioned in the heart of Barnsley town centre.


Barnsley Civic is a large and diverse arts & cultural centre. Our 150-year old building is Grade II listed. Across four floors, and over 50,000 square feet, our public spaces include an adaptable 398-seat assembly theatre, a 50-seat studio theatre, three large development spaces, contemporary exhibition spaces, a classes studio, bars and catering spaces, and a welcoming community space in our newly reopened frontage. Alongside these public rooms, the building also holds a range of different office spaces occupied by resident companies and artists.

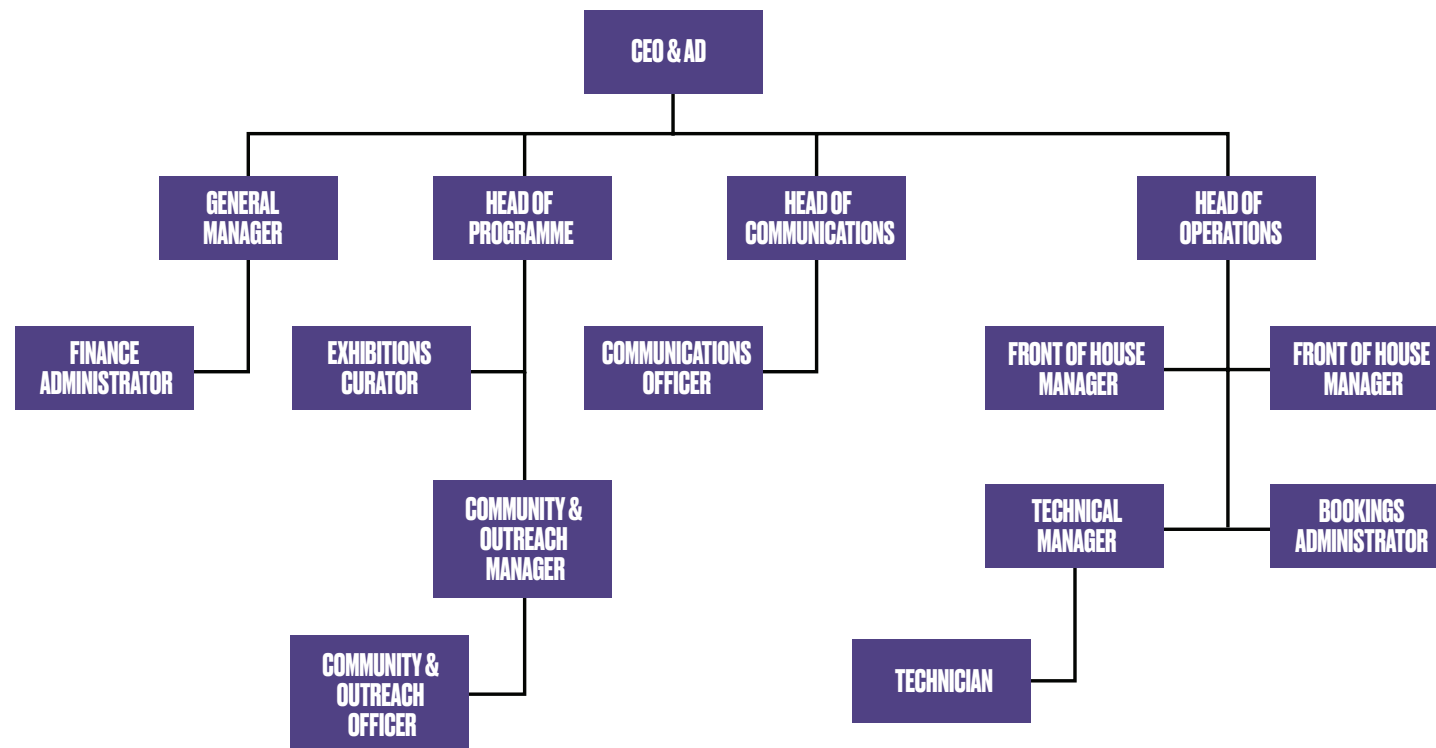
As a receiving house we programme a rich variety of performance and visual arts, welcoming national and regional tours and touring art exhibitions. We host a broad mix of theatre, dance, family shows, gigs, comedy and entertainment. Alongside external programming, we are expanding our in-house production capacity, with both solo and co-produced projects in development. Like all mixed-use arts buildings we also support a range of private hire events to cross-subsidise our artistic programme.

Both within our building and beyond, our in-house engagement team works with a wide range of community partners and educational institutions to bring creative activities to Barnsley communities. Core activities include Cross the Sky, a theatre company working with learning-disabled adults. We also deliver a growing heritage engagement programme, with support from partners like Historic England. A productive partnership with local and regional government provides the additional resources needed to help us maximise the impact and reach of our creative engagement and cultural programme.

As an Arts Council England National Portfolio Organisation we are focused on supporting the development of the local and regional cultural ecosystem. Our artist support and development activity includes a diverse studio theatre programme of new works, and the provision of creation space for both visual and performing artists. As the most significant ACE-funded cultural building in our area, we host many associate and resident artists and companies, and act as a meeting place for the whole regional cultural sector.

ABOUT US

Organisational Structure



A BIT ABOUT BARNLSLEY

Barnsley is a welcoming, thriving, and vibrant location and is fast becoming one of Yorkshire's most exciting places to live, work visit and explore.



Living in Barnsley gives you the best of what South Yorkshire has to offer - bustling towns surrounded by incredible outdoor space, it's minutes from the M1 and has superb transport links (train/ bus/ road).

Sitting on the northeast edge of the Peak District National Park, Barnsley is perfect if you enjoy getting out and about.

With picturesque countryside, beautiful parks and gardens (Yorkshire Sculpture Park), stately homes, industrial heritage, nature reserves, the Trans Pennine Trail, galleries, a wealth of public art, and bustling historic markets, right on the doorstep, it has plenty to offer.

There are some fantastic places to set up a home. Like most of South Yorkshire, Barnsley is best known for its rugged stone-built terraced homes but the most popular properties in the area are three-bedroom semi-detached homes - outlining Barnsley's appeal to families.

And with new developments springing up, the town also offers its fair share of newer houses, as well as town centre apartments close to the station for commuters.

Barnsley town centre recently underwent a £220M transformation, bringing a brand-new retail and leisure complex, The Glass Works and a great day, evening and night-time offer. This is driving footfall and business and attracting visitors from across the region.

The town centre is also home to The Seam development, Barnsley's Digital Campus. An urban village will transform the two Digital Media Centres and the Barnsley College Sci-Tech Digital Hub and will be a testbed for innovative ideas, supporting the Barnsley economy to grow, with digital and smart tech at the heart of it.

Across the borough, investment continues, with several major schemes underway and more in the pipeline.

TRUSTEES OF BARNSLEY CIVIC

Barnsley Civic is seeking experienced and committed individuals to join the Board to help us to deliver the organisation's ambitions and to make a major contribution to the future success of the organisation.

The Board of Barnsley Civic is responsible for the overall stewardship of the charity and for the overview of organisation's vision, development and performance, including:

- Ensuring Barnsley Civic meets its legal, charitable and financial obligations.
- Appointing and setting pay and conditions for the Chief Executive.
- Challenging and supporting the Senior Leadership Team.
- Maximising incoming resources.
- Approval of annual plans and budgets.
- Ensuring implementation of internal policies and the Strategic Plan.
- Regularly reviewing progress on the delivery of the Business Plan.
- Reviewing progress and ensuring tight budget control of Barnsley Civic's major capital programme.

Trustees are expected to:

- Be committed members of Barnsley Civic's team, keeping up to date with its activities and plans.
- Regularly attend performances at the venue and outreach events in the local community.
- Be advocates of Barnsley Civic in the local and regional community.
- Help to attract resources to support Barnsley Civic and its work, and support fundraising and other development initiatives.
- Support the Leadership Team in specific areas as required, including acting as Board Champions for key areas of activity.
- Participate in Standing Committees as required.
- Maintain confidentiality in relation to the charity's work.
- Attend events for businesses, sponsors and audiences as required.
- Attend the majority of Board meetings in person

WHO WE ARE LOOKING FOR

Barnsley Civic is committed to increasing the diversity of its Board, staff, and services as an essential aspect of its drive to continued success in the future. The Board is also keen to receive applications from younger members of the local communities that Barnsley Civic serves, both from Barnsley and also from South Yorkshire.

We are looking for Trustees who can commit to the next three years (with the possibility to renew for a further term of three years).

In order to join the Board, applicants should be able to demonstrate the following:

- An understanding of the importance of equality and diversity in the workplace.
- An interest in the performing and visual arts.
- An understanding of charity governance and the responsibilities of the Board.
- An interest in the role of the arts in supporting education and community development.
- A track record of leadership and strategic thinking.
- A passion for Barnsley Civic as a vital and integral resource for the people of Barnsley town and borough.



TRUSTEES OF BARNSLEY CIVIC

TIME COMMITMENT

The time, enthusiasm and contribution our Trustees make is highly valued by our Staff Team, and we aim to foster strong working relationships and mutual respect between Trustees and Staff members. Our Staff team commit to high standards in delivering our work and fostering greater enjoyment within the community, and the Board's dedication plays a crucial role in making a positive impact on the lives of many.

Applicants are advised to carefully consider whether they can commit enough time to fully engage with the organisation. It is essential that potential Trustees can allocate the necessary time and effort to actively participate in our mission and support our endeavours effectively. Trustees are encouraged to regularly engage with the theatre and gallery programme at Barnsley Civic, and to support community events.

There are normally four Board meetings a year, with a Staff & Board get-together and an all-day strategy meeting once a year. The Board has a number of standing committees – Finance, Fundraising, Business Development, and Environmental – which meet quarterly and are each led by a Trustee. Other sub-committees and task groups are convened when needed and Trustees are expected to lead and contribute where their skills are appropriate. Trustees are rewarded with 2 free tickets per calendar year and can 'earn' additional tickets by volunteering at in-house shows and events.

Trustees are appointed for a period of three years, following which they may be invited to stand for re-election for a second period of three years. The maximum term that may be served is therefore six years. This is a voluntary and unremunerated position, however, expenses incurred on Barnsley Civic business can be reimbursed.

<https://www.gov.uk/guidance/charity-trustee-whats-involved>



IMPORTANT INFORMATION

LOCATION

Barnsley Civic
Hanson Street
Barnsley
South Yorkshire
S70 1QA

EQUALITY

Barnsley Civic passionately believes in equality of opportunity and is firmly committed to encouraging equality, diversity, and inclusion throughout the cultural sector. We encourage applications from every part of society and will strive to make any necessary adjustments for the successful candidate and interviewees.

Reasonable expenses can be paid for travel or access requirements.



Distances from Barnsley	
Sheffield	20mins
Leeds	25mins
Manchester	70mins

NEXT STEPS

If you are interested in joining our Board of Trustees please contact Dan Winder danwinder@barnsleycivic.co.uk



Supported using public funding by
**ARTS COUNCIL
ENGLAND**



BARNSLEY
Metropolitan Borough Council